



GMT MONTHLY MEMBERSHIP PROGRESS REPORT

Results as of: 3/31/2018

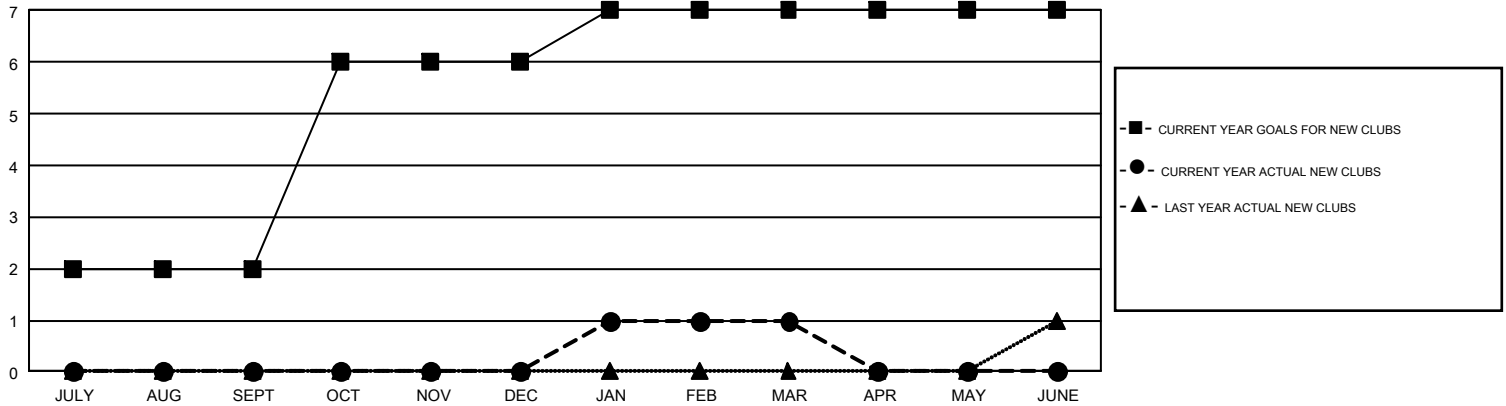
GMT Constitutional Area 7, Group B

GMT: CLIFFORD HEYWOOD

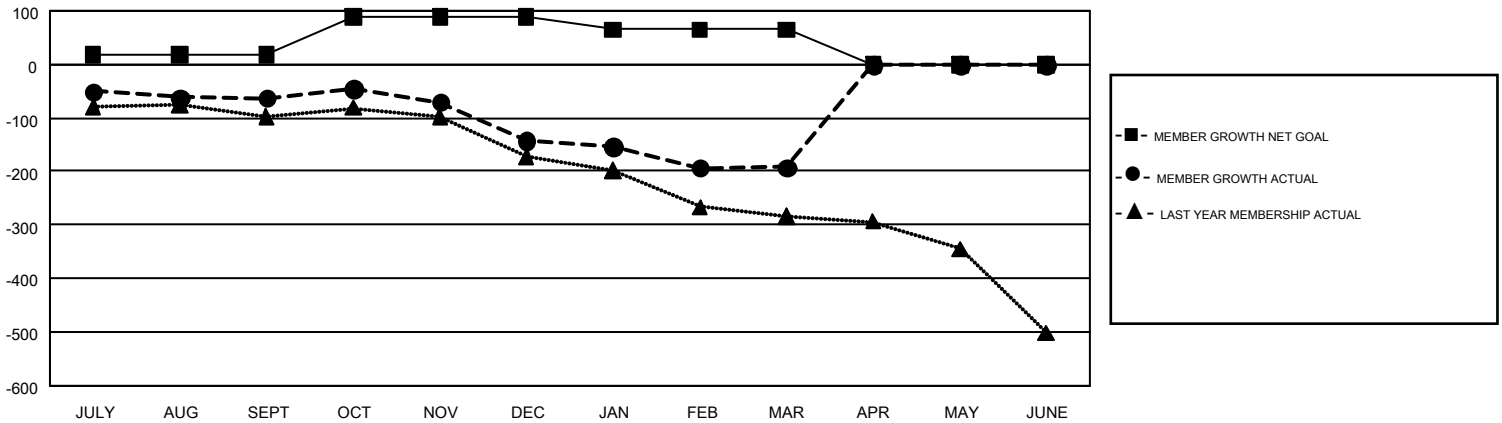
REPORT DOES NOT INCLUDE CLUBS IN UNDISTRICTED AREAS.

Clubs				Members			
RESULTS FOR 2017-2018				RESULTS FOR 2017-2018			
QUARTER	NEW CLUB GOAL	NEW CLUBS	DROPPED CLUBS	QUARTER	MEMBER GROWTH NET GOAL	MEMBER GROWTH ACTUAL	DROPPED MEMBERS ACTUAL (including transfers)
JULY/AUG/SEPT	2	0	4	JULY/AUG/SEPT	18	209	235
OCT/NOV/DEC	4	0	0	OCT/NOV/DEC	71	220	264
JAN/FEB/MAR	1	1	3	JAN/FEB/MAR	-24	180	196
APR/MAY/JUNE	0	0	0	APR/MAY/JUNE	-65	0	0

GOALS AND ACTUAL NEW CLUBS CUMULATIVE



GOALS AND ACTUAL MEMBERS CUMULATIVE



DROPPED CLUBS: 7	205 CLUBS OF 362 ADDED 1 OR MORE NEW MEMBERS	<u>GENDER DISTRIBUTION</u> MALE 6,724 (69.77%) FEMALE 2,913 (30.23%)
<u>DROPPED MEMBERS</u> DECEASED 106 CLUB CANCELLED 0 OTHER 589 TOTAL 695	CLICK HERE FOR CUMULATIVE MEMBERSHIP DATA	TOTAL FAMILY UNIT MEMBERS 849 FAMILY MEMBERS PAYING HALF DUES 430